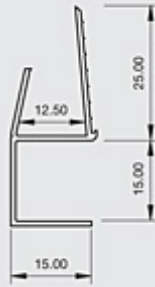
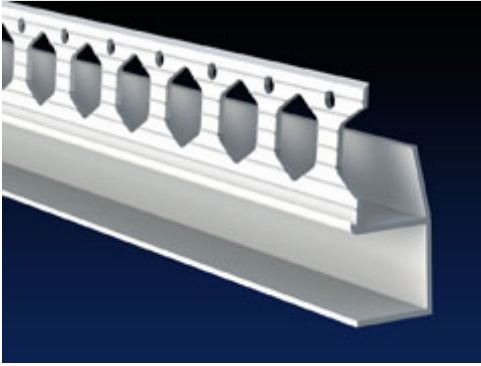


Drylining beads: SGU15



Locally manufactured from recycled plastic, Renderplas PVCu architrave shadow gap beads are designed for plasterboard to quickly and accurately form a shadow gap and provide a superior clean finish. Used at the edges of the plasterboard next to door frames, ceilings and skirting boards where the adjacent finish is hidden

Performance: design data

| | | | |
|---------------------|--|--------------------------|---|
| Affiliations | Federation of Plasterers and Drywall Contractors | Fire | Class 1Y. Combustible within fire source, self extinguishing upon removal of flame, will not contribute to the combustion of the system |
| Applications | Used to form a shadow gap at the edges of the plasterboard next to door frames, ceilings and skirting boards where the adjacent finish is hidden | Health and Safety | PVCu beads are safe to handle removing the dangers of cut metal; suitable for prisons and schools |
| Chemical | Zero chemical reaction with water, plaster, water based paint; avoid organic solvents, chlorate bleach, strong acids and alkalis | Heat | Ideal for all habitable conditions |
| Durability | Impact resistant; dissipates shock waves; outlasts metal; cleaned or painted in same way as plaster | Guarantees | Fit for purpose for at least 25 years |
| Economics | Dramatic reduction in time to form a shadow gap compared to traditional methods; resistant to impact damage | Mechanics | 10.5mm slot expands when board is inserted to form a good fit |
| Environment | Locally manufactured; maximum recycled content; fully recyclable; low Ecopoint score of 0.004/kg delivered | Pollution | Ecologically benign; non-hazardous in water; non-hazardous if ingested; does not release substances into the atmosphere |
| | | Strength | PVCu beads offer superior resilience to impact |
| | | Weather | Not affected by weather and should be specified in all regions of high moisture or high salt |

Specification: standard data

| | | | |
|------------------------|---|---------------------------|--|
| Type | SGU15 | Weight (kg/100m) | 11.2 |
| Authority | Manufactured to ISO 9001:2000; Complies with BS EN 13914-2:2005; Fire Tested to BS 476; Complies with REACH | Stock Colours | White |
| Brand Names | Renderplas | Length | 3.0m |
| Description | 15mm PVCu architrave shadow gap 'U' profile | Packaging | 6 lengths in triwall fibreboard boxes |
| Composition | Exterior grade impact resistant UV stable unplasticised PVCu | Format | Cut lengths |
| Dimensions (mm) | 15mm gap and 24mm wing | Recycled Content % | 100% |
| Depth (mm) | 12.5mm board | Light | UV Stable; minimal discoloration is uniform over a single facade and within industry standards |

Site works

| | | | |
|---------------------|---|----------------|---|
| Installation | Standard industry practice and tools can be used. Cut to length with tin snips or fine tooth saw. Non-corrosive mechanical fixings should be used | Storage | Store vertically out of direct sunlight or extreme temperatures. Can be stored flat if supported along entire length |
| | | Supply | Ex-stock next day delivery to site through extensive supply chain or direct from www.renderplas.co.uk |